

Sample Gas Filter AGF - VA - 23



Sample gas streams must be conditioned to provide particulate and moisture-free gas to the analyzer.

The AGF-VA-23 with the Bühler Unique QC mounting block provides fine filtration and easy replacement of the filter media without the use of tools. This means the filter media can be changed in a matter of seconds.

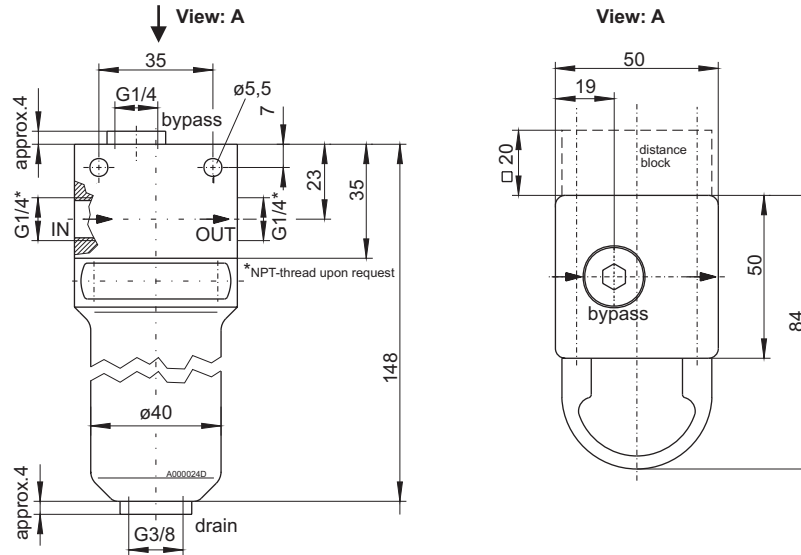
The QC block rotates 180° making the mounting of the filter independent from the flow direction chosen. This versatile mounting feature makes installation problem-free.

The filter head has an auxiliary port that can be used either as a bypass or for optional moisture detector installation.

A choice of filter media is available to meet any specific application need. The filter and housing provide a small dead volume resulting in minimal loss of response time.

- **Bühler Unique QC mounting block**
- **Easy filter change without tools**
- **Low dead volume for reduced response time**
- **Variable attachment configurations**
- **Optional condensate drain**
- **Filter head with auxiliary port for bypass or moisture detector**

Dimensions



Technical Data

Temperature max.*	see table
Pressure max.*	160 bar
Dead volume with filter element	
DRGxxSO-V/-P	50 ml
DRGxxxVA-V	56 ml
F2 / F25	51 ml
Weight approx.	1.7 kg

Material

Housing	1.4571 / SS 316 Ti
Filter elements	See table
Seal	Viton or Perfluorelastomer

*Temperature and pressure are reduced when optional moisture detector is installed.



Application in explosive atmosphere (additional indications):

The equipment corresponds to the essential requirements of the directive 94/9/EC. Therefore they can be used in explosive atmosphere (**Zone 1; Group IIC**). Inflammable gases and flammable gases (only temporary explosive in normal operation, **Zone 1; Group IIC**) can be led through this gas filters.

Note indications of risk in the installation- and operation instruction of the filter!

Please indicate with order

Filter housing will be delivered with attachment kit, bolts DIN 912 M5x80, and plugs in auxiliary, head port and bowl port.

Filter (housing only) order element from table below separately

Part no.	Type	Seal
41 42 999	AGF-VA-23-V for mounting filter elements DRG	Viton
41 45 999	AGF-VA-23-P for mounting filter elements DRG	Perfluorelastomer
41 42 699	AGF-VA-23-V-F2/F25 for mounting filter elements F2 / F 25	Viton
41 45 699	AGF-VA-23-P-F2/F25 for mounting filter elements F2 / F 25	Perfluorelastomer

Filter elements

Part no.	Type	Seal	Material	Temp. max.	Pore size	Area	Pcs.
78 56 966	DRG 25 VA-V	Viton	1.4301 / epoxy resin	120 °C	25 µm	70 cm ²	1
78 56 974	DRG 60 VA-V	Viton	1.4301 / epoxy resin	120 °C	60 µm	70 cm ²	1
78 56 982	DRG 100 VA-V	Viton	1.4301 / epoxy resin	120 °C	100 µm	70 cm ²	1
41 03 003	DRG 25 SO-V	Viton	1.4301 / 1.4401	150 °C	25 µm	70 cm ²	1
41 03 004	DRG 60 SO-V	Viton	1.4301 / 1.4401	150 °C	60 µm	70 cm ²	1
41 03 008	DRG 25 SO-P	Perfluorelastomer	1.4301 / 1.4401	260 °C**	25 µm	70 cm ²	1
41 03 009	DRG 60 SO-P	Perfluorelastomer	1.4301 / 1.4401	260 °C**	60 µm	70 cm ²	1
41 03 00 50	F2	--	PTFE sintered	100 °C	2 µm	60 cm ²	5
41 02 01 30	F25	--	PTFE sintered	100 °C	25 µm	60 cm ²	5

Other filter elements upon request

** At reduced maximum pressure