

Off-line filter unit FGM 30 (60) / Pi 2728-57



This mobile off-line filter unit can be used for in-house application, as a service unit on installation sites, or for after-sales service applications. Due to its compact and lightweight design, it can be transported easily in every service van.

The gerotor pump with either 30 or 60 l/m flow rate emits low noise and contributes to the low weight of the unit.

The compact and lightweight Mahle Pi 270 filter provides two cartridges with large filtration area at long lifetime, resulting in low maintenance costs.

Depending on the application, retention rates between β_3 , β_6 , β_{10} , or β_{25} can be selected according to the required cleanliness.

The Sm-x filter material combines a large spectrum of retention rates with high dirt-holding capacity.

The unit incorporates a drip pan with drain cock and safe storage for suction and pressure hose. The suction hose has a coarse inlet filter to protect the pump from debris. Also a jetting lance is integrated at the outlet.

Two fixed and two revolvable castor wheels together with a hinged handle provide a good maneuverability.

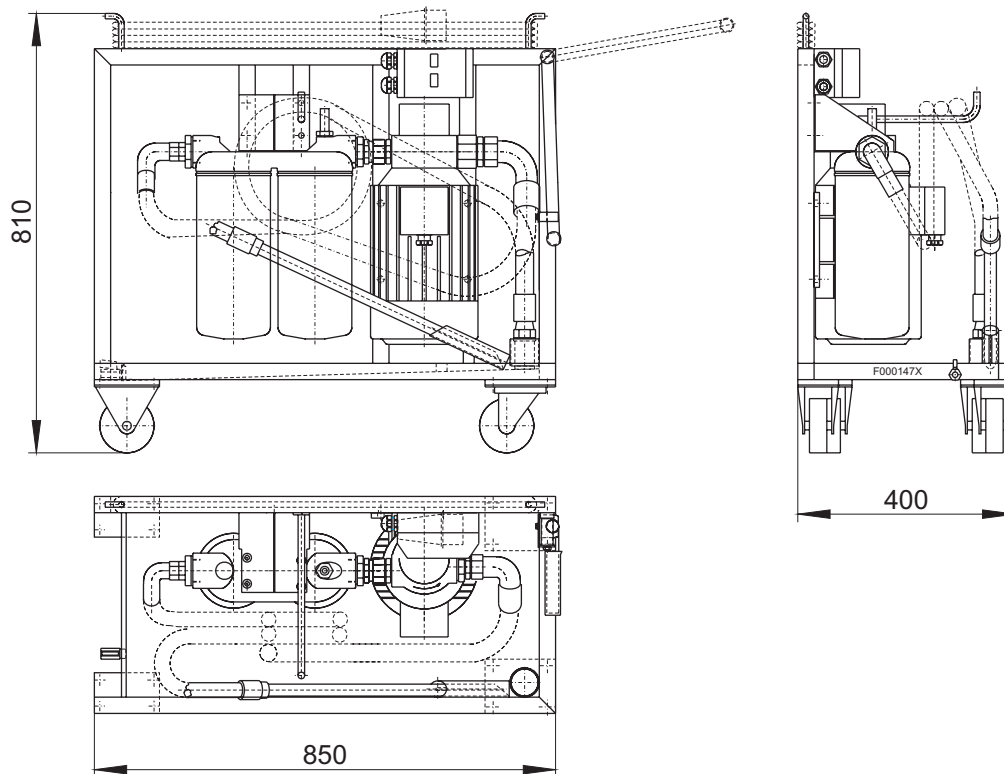
Technical Data

Pump	Dirt-repellent gerotor pump, directly attached to the shaft of the electric motor. Suction hose with coarse strainer.		
Controls	Motor safeguard, 5 m oil resistant cable CEE plug.		
Filter	Mahle PI 2728-57, with optical contamination indicator		
Bypass	Cracking pressure Δp 3.5 bar		
Contamination indicator	Cracking pressure Δp 2.2 bar		
Accessories (included)	30 l/min.	60 l/min.	Length
Suction hose	DN 25	DN 32	2 m
Pressure hose	DN 20	DN 20	2 m
Filter cartridge (not included)	3 μ m, 6 μ m, 10 μ m, 25 μ m		

Motor / Pump unit

	Flow l/min.	Power kW	Voltage V	Rotational speed rpm	Max. pressure bar	Max. viscosity mm ² /s
FGM 30	30	0,75	230/400 V, 50 Hz \pm 5% 276/480 V, 60 Hz \pm 5%	1410	10	300
FGM 60	60	2,2	230/400 V, 50 Hz \pm 5% 276/480 V, 60 Hz \pm 5%	1410	10	300

Dimensions (mm)



Order Information

Part-No.	Model
270 020 30	FGM 30 / Pi 2728-57
270 020 20	FGM 60 / Pi 2728-57

Filter cartridges (not part of delivery)

Part-no.	Model	Retention rate
78714750	HC 66	3 μ m
7478829	HC 60	6 μ m
7643844	HC 35	10 μ m
7643851	HC 36	25 μ m