



Sample gas probe GAS 222.11 Ex2

In many applications gas analysis is the key for safe and efficient control of process flows, environmental protection and quality assurance. In extractive gas analysis the location of the gas sampling point is crucial for the reproducibility and accuracy of the analysis results.

The specific filter capacity, corrosion resistance and functional equipment requirements for the probe arise from the composition of the sample gas.

However, operating costs are also an important criterion in the selection, as the sampling points are frequently located at hard to access points in the system. Effective particle filter backwashing options and low maintenance characterise the extensive GAS probe series.

Versions with Atex and IECEx approval

Unheated probe with shut-off valve and/or upstream filter

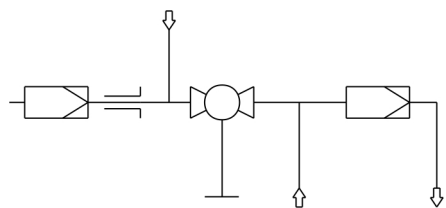
The filter element can easily be removed by turning the handle 90°

For dust loads up to 2 g/m³, non-condensable gases.
Combined with upstream filter up to 10 g/m³ and higher

The probe is permitted for use in explosive areas



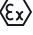
Flow chart



Technical Data

Gas Probe Technical Data

Ambient temperature without accessories: -20 to +80 °C

Ambient temperature for accessories:	Component	Ambient temperature range
	Valve for pressurized air:	-30 °C < T _{amb} < +55 °C
	Solenoid valve for pneumatic actuator:	-10 °C < T _{amb} < +55 °C
	Pneumatic actuator:	-20 °C < T _{amb} < +80 °C
	Limit switch:	-25 °C < T _{amb} < +60 °C
	Junction box:	-20 °C < T _{amb} < +70 °C
Max. gas inlet temperature:	+195 °C (T3)/+130 °C (T4)	
Medium temperature (blowback):	Component	Medium temperature range
	Valve for pressurized air:	-10 °C to +80 °C
	Solenoid valve for pneumatic actuator:	-10 °C to +100 °C
Max. operating pressure:	6 bar	
Materials in contact with media		
Flange:	Stainless steel 1.4571	
Probe body:	Stainless steel 1.4571	
Ball valve:	Stainless steel 1.4408/1.4462/PTFE	
Seal:	Stainless steel 1.4404/graphite/and see filter	
Markings:	ATEX:  II 3G Ex ec mb IIC T3/T4 Gc IECEx: Ex ec mb IIC T3/T4 Gc	

Ordering instructions

The item number is a code for the configuration of your unit. Please use the following model key:

4622211	X	X	X	X	X	X	0	0	X	X	X	X	X	X	Product characteristics
															Junction box
															No
															Yes
															Flange
															Flange DN65 PN6
															Flange DN3"-150
															Hazardous area Outside and Inside
															Ex-Zone 2 outside, none inside
															Ex-Zone 2 outside and inside
															Temperature class
															T3
															T4
															Power supply sample probe
															none
															Calibration gas port
															No
															6 mm
															6 mm with check valve
															1/4"
															1/4" with check valve
															Capacitive vessel *
															No
															Yes
															Valve for pressurized air *
															Ball valve
															Solenoid valve 110 V (marked with "mb")
															Solenoid valve 230 V (marked with "mb")
															Solenoid valve 24 V (marked with "mb")
															none
															Pneumatic actuator for internal ball valve
															No
															Mono stable depressurized open
															Mono stable depressurized closed
															Limit switch for pneumatic actuator
															No
															Yes
															Solenoid valve for pneumatic actuator
															No
															110 V (marked with "mb")
															230 V (marked with "mb")
															24 V (marked with "mb")

* Blowback of explosive atmosphere prohibited.

Options

The base unit becomes functional by adding accessories suitable for the application. Please refer to accessory data sheet no. 461099 for information.

Please also refer to data sheet no. 461000 "GAS 222 Gas Probes" for a general description.

Dimensions

