

## Sample gas probe GAS 222.15

In many applications gas analysis is the key for safe and efficient control of process flows, environmental protection and quality assurance. In extractive gas analysis the location of the gas sampling point is crucial for the reproducibility and accuracy of the analysis results.

The specific filter capacity, corrosion resistance and functional equipment requirements for the probe arise from the composition of the sample gas.

However, operating costs are also an important criterion in the selection, as the sampling points are frequently located at hard to access points in the system. Effective particle filter backwashing options and low maintenance characterise the extensive GAS probe series.

### Heated probe with downstream filter

The downstream filter can easily be removed by turning the handle 90°

The probe body and the area around the screw connection for the heated sample gas line are completely isolated

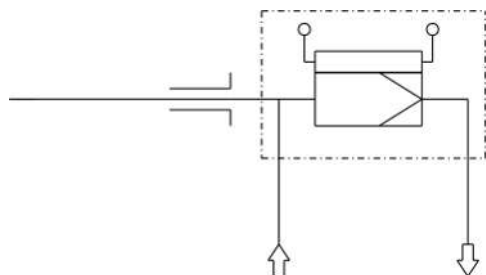
Self-regulating heater to approx. 356 °F with low temperature alarm

For dust loads up to 2 g/m<sup>3</sup>

This probe is not suitable for use in Ex areas



## Flow chart



## Technical Data

## Gas Probe Technical Data

Probe operating temperature:	max. 395 °F
Ambient temperature:	-4 to 176 °F
Self-regulating heater:	356 °F
Low temperature alarm:	Contact open at operating temperature, closes at < 284 °F, Max. switching current 4 A
Electrical data:	230 V, 2.0 A, 50/60 Hz 115 V, 3.8 A, 50/60 Hz
Max. operating pressure:	85 psia
Parts in contact with media:	Flange: 1.4571 Seals: Graphite/1.4404 and see filter

## Ordering instructions

The item number is a code for the configuration of your unit. Please use the following model key:

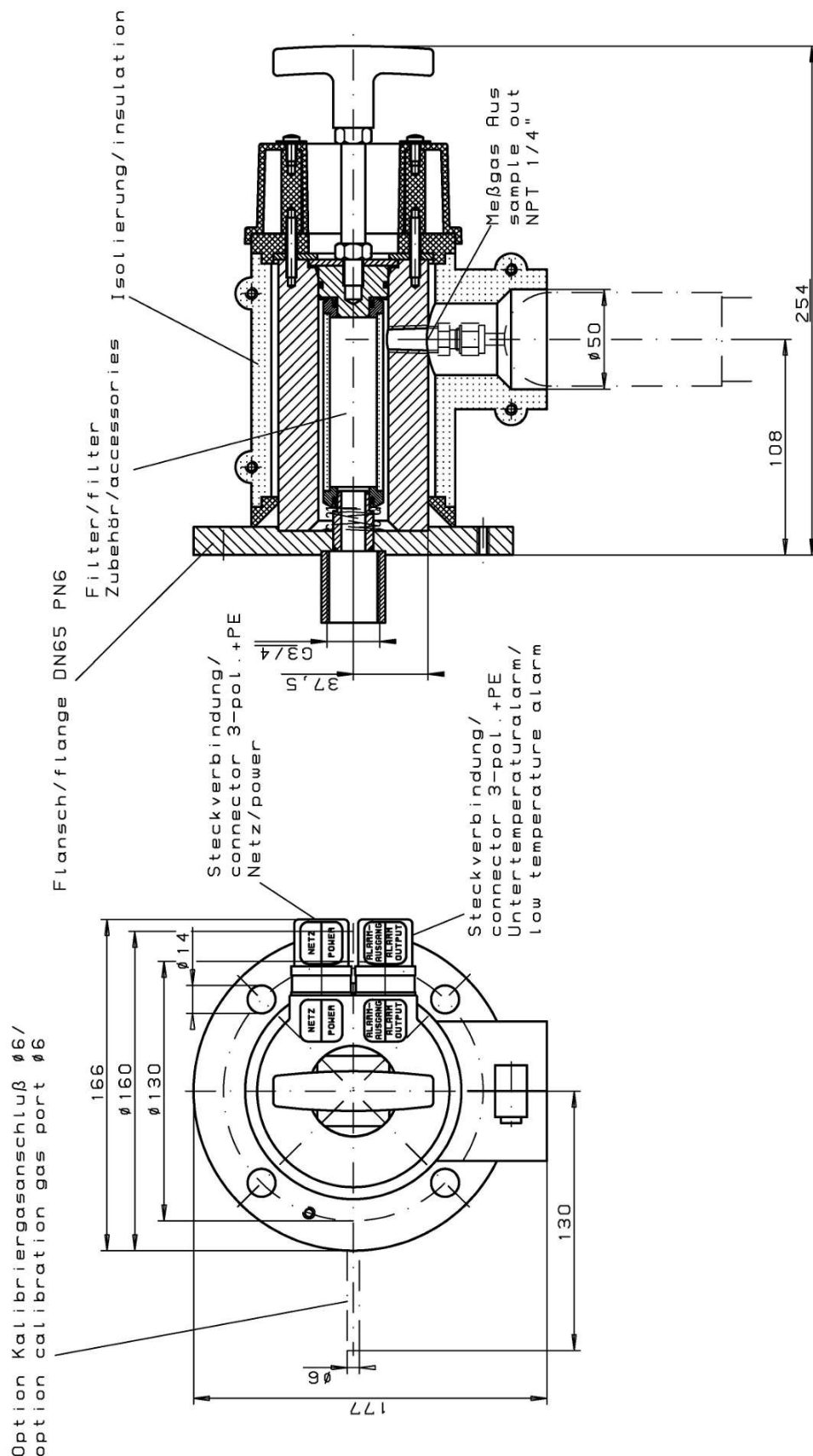
4622215	0	9	9	0	3	X	0	0	9	9	9	9	9	9	Product Characteristics	
															Flange type	
															DIN DN65 PN6	
																Power supply sample probe
		3														115/230 V
																Calibrating gas connection
		0														No calibrating gas connection
		1														6 mm
		2														6 mm + check valve
		3														1/4"
		4														1/4" + check valve

## Options

The base unit becomes functional by adding accessories suitable for the application. Please refer to accessory data sheet no. 461099 for information.

Please also refer to data sheet no. 461000 "GAS 222 Gas Probes" for a general description.

## Dimensions



GAS 222.15

Werkstoffe/materials  
-Flansch, Kopf/flange, head  
Betriebstemp. Sonde/operating temp. probe  
Heizung/heating  
-Temperatur/temperature  
-Untertemperaturalarm/low temperature alarm  
max. Schaltstrom/max. current  
-Umgebungstemperatur/ambient temperature

1.4571/SS 316Ti  
max. 200°C / 392°F  
100-250VAC 400W  
180°C / 356°C  
selbstregelnd/self regulating  
150°C / 302°F  
4A  
-20 bis/to + 80°C  
- 4 bis/to + 176°F

ALLE RECHTE VORBEHALTEN		Maße ohne Toleranzangabe nach ISO 2768-mK		Maßstab 1:2	(Gewicht)
h	1x	19.04.02Br	Datum	Name	
g	2x	28.08.01Br	Bearb.	06.07.97Br	Inkenn
f	2x	28.10.99Br	Gepr.		
e	1x	14.10.98Br			
d	neu	05.08.98Br			
c	neu	10.11.97Br			
b	neu	04.09.97Br			
a	1x	08.08.97Br			
Zust.	Rev.	Datum	Name	Erst	für 46/068-01-4
Benennung: Gasentnahmesonde sample gas probe GAS 222.15					
Zeichnung-Nr. 46/068-01-3H					
Art.-Nr. 4622215					
ARBEITSANWEISUNG:					